

A Virtual Training of Trainers: Adaptations from COVID-19



Chelsie Kolberg, MPH, RD
Bryan Pride, MPP



Learning Goals

At the end of this presentation you will be able to....

- Discern alternative methods to implementing programs
- Recognize how implementation practices can be dynamic in the face of crises (like COVID-19)
- Explore methods to empower local communities to drive their own development

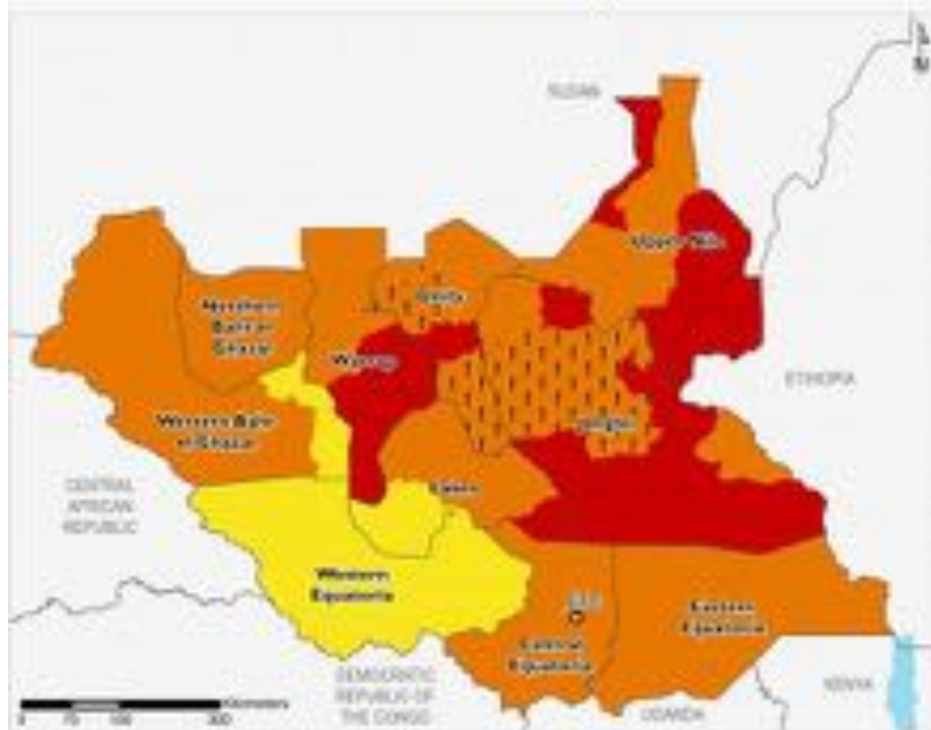
Outline

Key elements of the presentation

- History & context
- COVID-19 and “The Pivot”
- Where to go next
- Unpacking the “Black Box” of implementation Science in International Development



October 2020 - January 2021



IPC v3.0 Acute Food Insecurity Phase

1: Minimal 2: Stressed 3: Crisis 4: Emergency 5: Famine

¹ Would likely be at least one phase worse without current or programmed humanitarian assistance

FEWS NET classification is IPC-compatible. IPC-compatible analysis follows key IPC protocols but does not necessarily reflect the consensus of national food security partners.

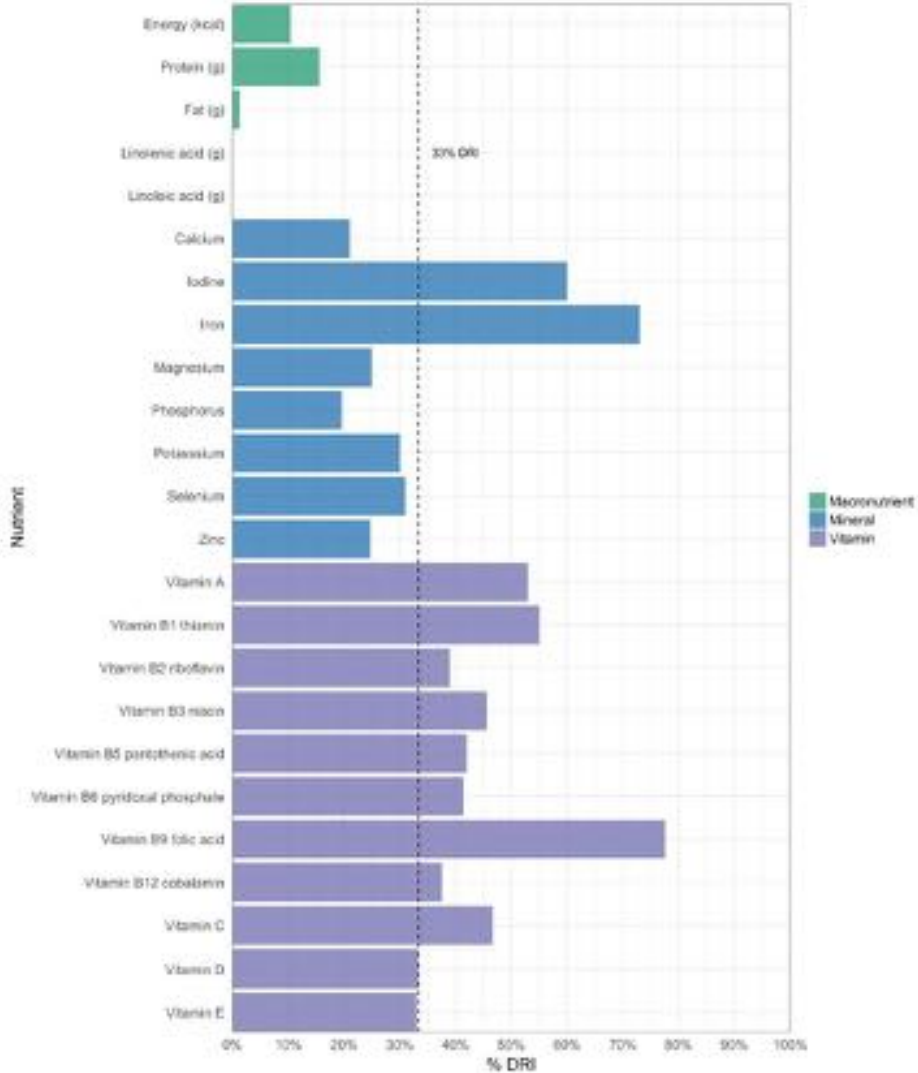
History & Context



Hope for
South Sudan



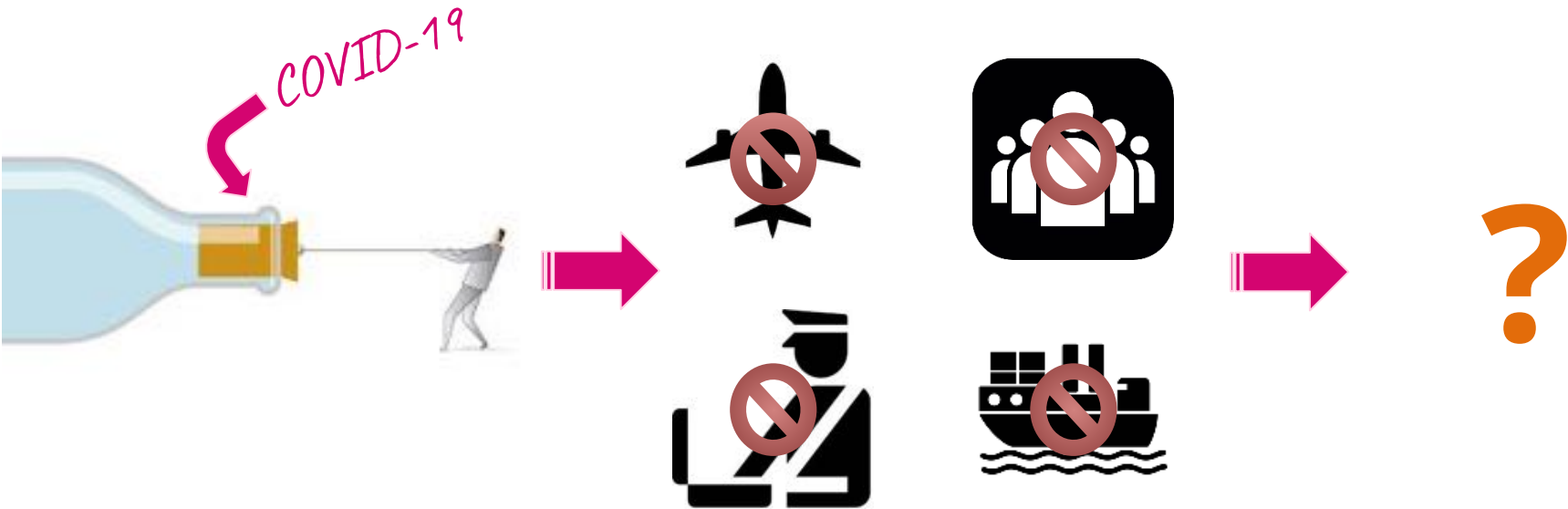
Dry Season							
*	Sunday	Monday	Tuesday	Wednesday	Thursday	Friday	Saturday
Breakfast	maize + red sorghum + sugar porridge	maize + red sorghum + sugar porridge	maize + red sorghum + sugar porridge	maize + red sorghum + sugar porridge	maize + red sorghum + sugar porridge	maize + red sorghum + sugar porridge	maize + red sorghum + sugar porridge
Lunch	beans + salt stewed green + groundnut paste	meat (beef) nsima (maize/sorghum powder)	beans + salt stewed green + groundnut paste	beans + salt stewed green + groundnut paste	RAH meal	beans + salt stewed green + groundnut paste	beans + salt stewed green + groundnut paste
Dinner	stewed green + groundnut paste limited starchy food	RAH meal	beans + salt stewed green + groundnut paste	stewed green + groundnut paste nsima (maize/sorghum powder)	meat (beef) nsima (maize/sorghum powder)	stewed green + groundnut paste limited starchy food	beans + salt stewed green + groundnut paste



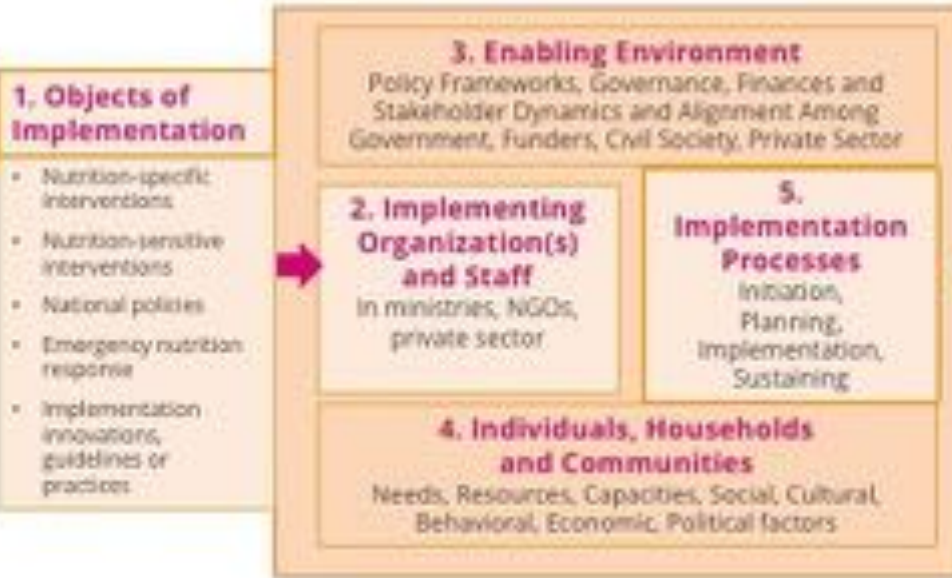
Empowering Leaders Through Nutrition-Smart Agriculture



"The Pivot"



Overview of the Process



(Adapted from Damschroder et al., Implementation Science 4:50, 2009)



data collection tool



Lessons Learned



- The US is different from South Sudan
- Turnaround time is high on video production
- Filming on a timeline congruent with seasons ensures viewing timeliness

Next Steps

Short-term

- Create filming timeline for align with seasons
- Pilot first 3 videos and incorporate feedback into next video batch
- Connect with US-based orgs with S Sudan ties
- Implement and improve the virtual ToT using videos (over next 5 years)



Long-term

- Scale-up the use of ToT videos to other projects
- Contextualize videos in other areas when applicable
- Limit influence of external organizations and provide resources for local leadership

*ToT = Training of Trainers

Nutrition Interventions



Nutrition Outcomes

The Black Box of Implementation

Nutritional Status

Unpacking the Black Box

What We Found Inside

- “The West Knows Best” mentality
- “Top Down vs. Bottom Up” designing and implementing
- Static vs. Dynamic implementation practices

Discarding the Black Box

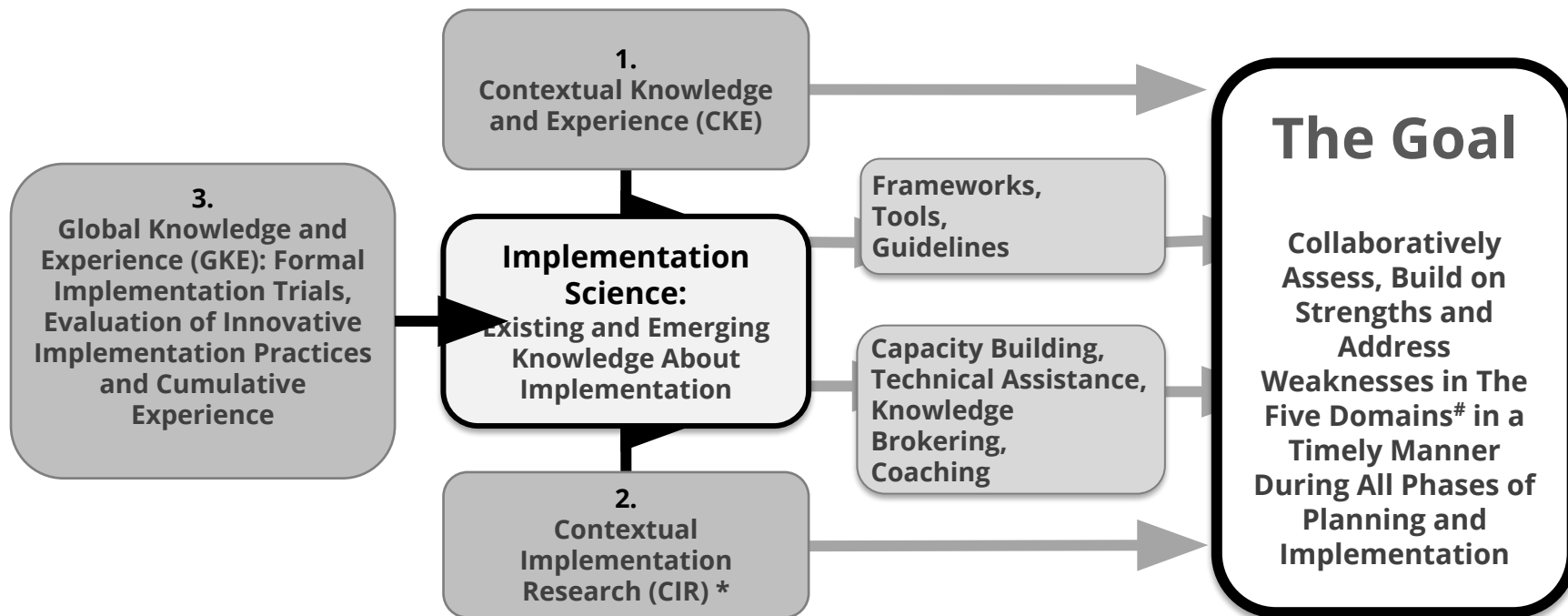
Creating implementation techniques that are the antithesis of the status-quo

- Empower Local Leaders rather than relying on Expatriate “Expats”
- Pre-prepare questions rather than solutions
- Set clear and accurate expectations with donors
- Implement programs that prioritize achieving project goals rather than project data.

Contribution to IS

1. Any Training of Trainers model can utilize tablets and videos to replace “expat experts”
2. Shift from “top-down” to “bottom-up” programming
3. Utilize current technologies to improve programming

Figure 3. An Integrative Framework for Implementation Science in Nutrition



Key

* = Refers to practical IR embedded in and connected to implementation, such as stakeholder analysis, opinion leader research, formative research, rapid assessments, operations research, special studies, process evaluation, costing studies, Delphi studies and various forms of quality improvement or quality assurance, and more.

[#] = The Five Domains that affect implementation are 1) Objects of implementation, 2) Implementing organization(s) and staff, 3) Enabling environment 4) Individuals, households and communities, and 5) Implementation processes

Conclusion

- **Programming needs to change**
- **COVID-19 spotlights problems**
 - **Bottom-up > Top-down**

“Before, it was unthinkable that we can produce our own food from our own soil. The knowledge for conservation agriculture, provision of nutritious meals, and financial support from Rise Against Hunger has boosted our morale. This is what it means to lift someone and empower a community and a country to understand and replicate compassionate love.”



-Peter Lomago, Hope for
South Sudan

#FoodHero

Acknowledgements



Audrey Moore
CEO, LUV



Eugenio Kirima
Chief Program Officer, LUV



Peter Lomago
HFSS Director



Keene Wallace
Videographer/Editor



Q&A



THE SOCIETY
FOR IMPLEMENTATION
SCIENCE IN NUTRITION

**Actions YOU can
take!**

Contact us... no seriously

Chelsie Kolberg, MPH, RD

LinkedIn:

<https://www.linkedin.com/in/chelsiekolberg/>

Email:

CKolberg@riseagainsthunger.org



Bryan Pride, MPP

LinkedIn:

<https://www.linkedin.com/in/bryanpride/>

Email:

bpride@riseagainsthunger.org

Podcast: *(coming soon)*

Hidden Development

Each episode analyzes the experience of aid workers and project participants to understand the "hidden" nuances and impacts that International Development agencies have on project communities.

Find out more

- Website: www.implementnutrition.org
- E-mail: info@implementnutrition.org
- Join us: <http://www.implementnutrition.org/get-involved/>
- Follow us:  **The Society for Implementation Science in Nutrition**
 @implementnutri

#SISNframework #InvestinIR



#SISNFramework
#InvestinIR

The Society for Implementation Science in Nutrition

Vision

A world where actions to improve nutrition are designed and implemented with the best available scientific knowledge and practical experience.

Mission

The Society convenes, advocates, disseminates and promotes dialogue among scientists, policy leaders, government officials, funders and practitioners to advance the science and practice of nutrition implementation world-wide.

SISN is constituted as a society of researchers *and* implementers who share a common vision, values and goals and who collaborate to achieve them.